

Introduction to WI-FI Functions

The AC system is equipped with remote control technology, with the WI-FI module inside the machine connected to the display panel and the command to run the AC transmitted. The AC system is in constant connection with a wireless router or access point attached to the Internet. Mobile terminals such as smart phones and tablet computers, on which special control software are installed and WI-FI modules successfully configured locally, can be used as remote controllers once they are connected to the Internet.

Download and install the control software

The control software can be downloaded and installed as follows.

1. For mobile terminals such as smart phones and tablet (Android 4.1 and iOS 6.0 or above only), search and download “AC Freedom” from Google Play or App store on and install it on your system.
2. You may also use your mobile terminal (Android 4.1 and iOS 6.0 or above only) to scan the “QR code” (see Fig.1) with a third party scan tool, which will automatically direct you to the download interface of AC Freedom for you to download and install the software.

Note: If the current version of your APP is not version 2.0 or higher, please update the APP before proceeding with device network configuration.



figure 1

Once the control software is installed, enter the “Scanning Interface”(for downloading the Welcome Page).There are two types of log-ons contained in the Scanning Interface(See Fig.2):

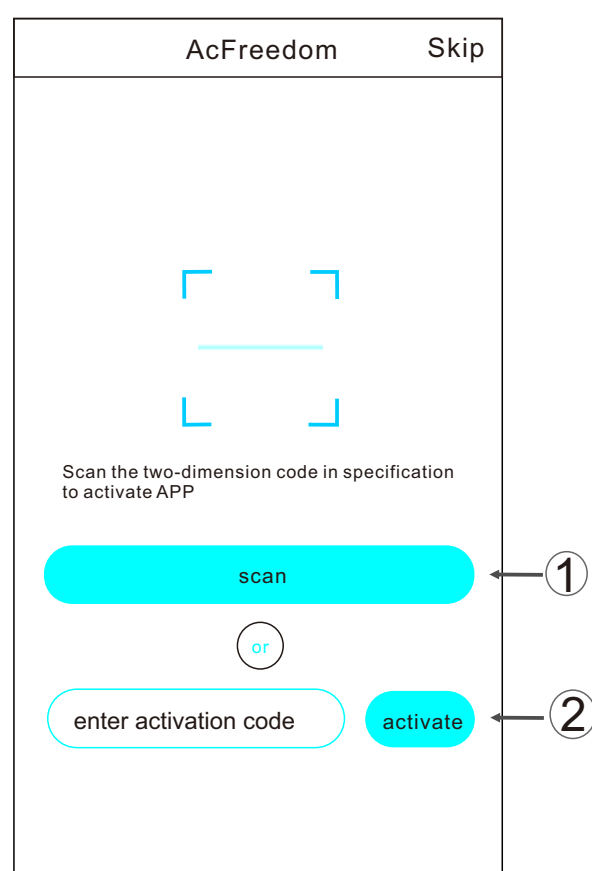


figure 2

Download and install the control software

1. By clicking “scan” and scanning the QR code on the right .(See Fig.3)

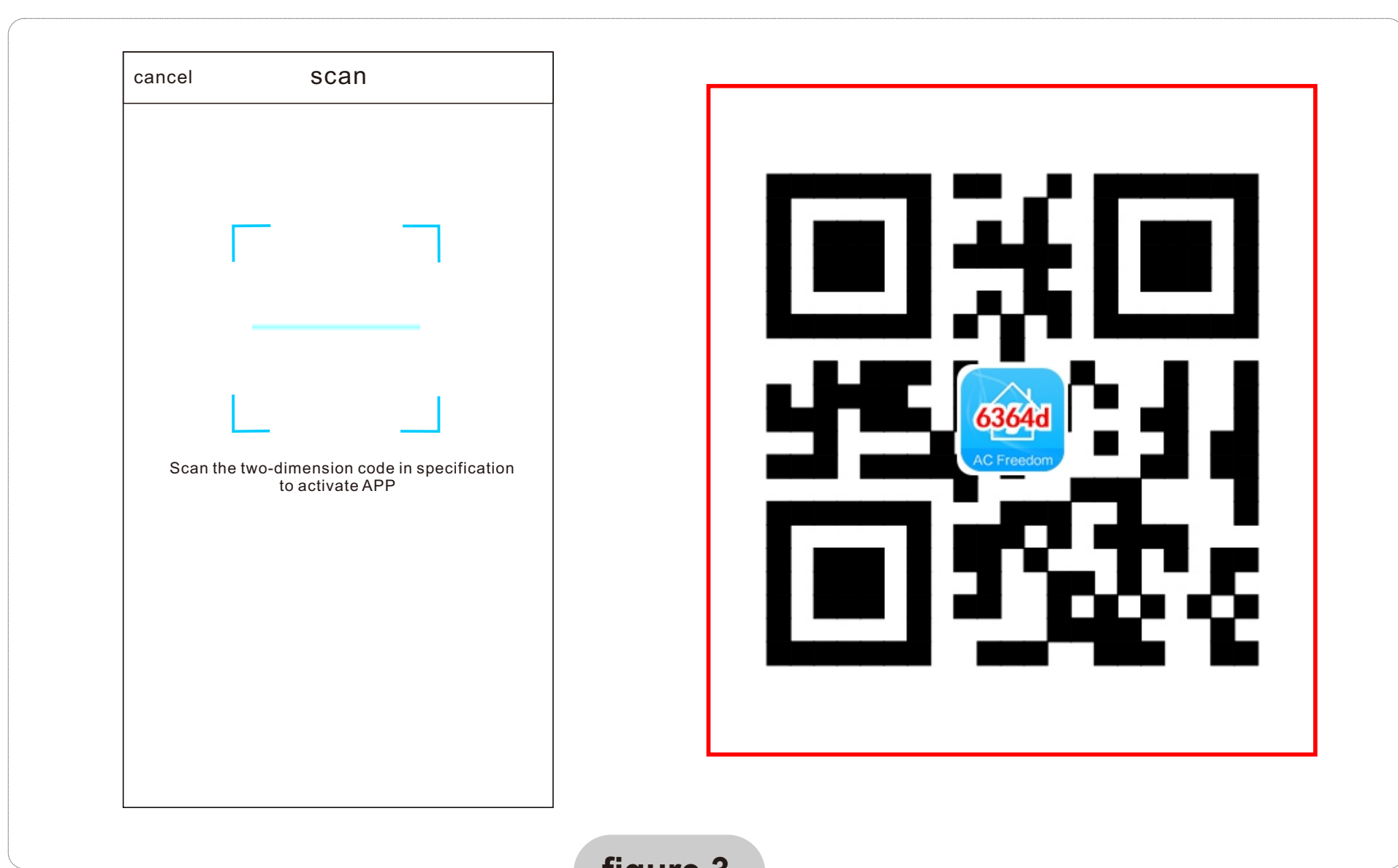


figure 3

2. By entering the activation code (6364d) in the area prompted by “enter activation code” (see Fig.4)

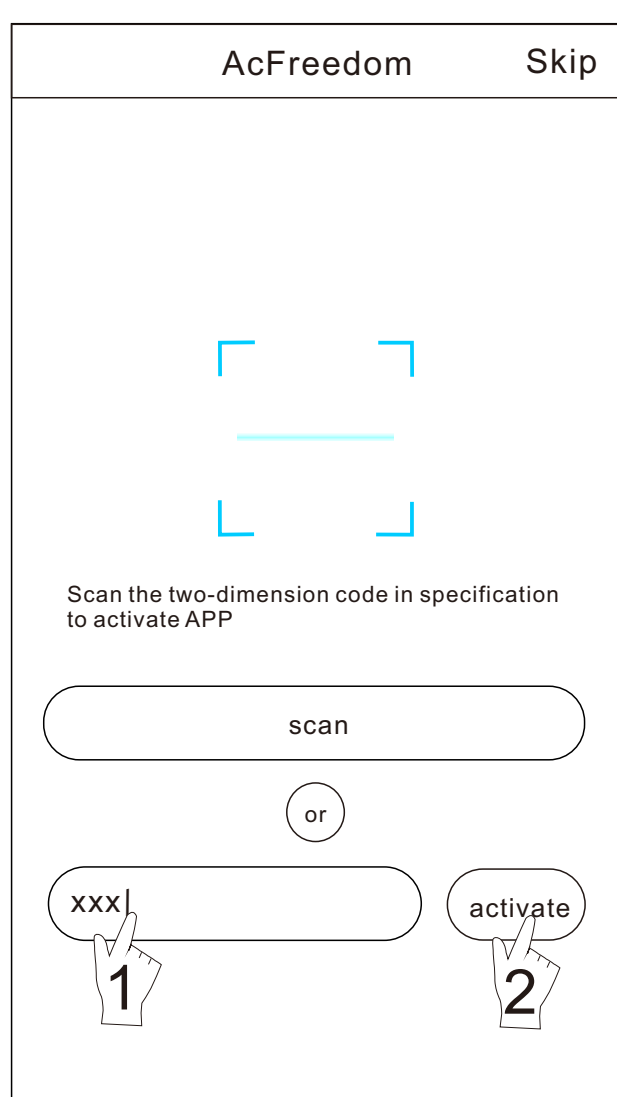


figure 4

Reset AC WI-FI module

In the case of first time configuration or after changing the connected wireless router is, the WI-FI module inside the air conditioner needs to be reset.

Note : The remote control provided in this figure is just one of many models which is for your reference only. Please rely on the model you have actually bought, though the operations are the same for all models.

* If remote controller with “HEALTH” button, reset the WI-FI module follow method 1;

* If remote controller no “HEALTH” button, reset the WI-FI module follow method 2.

Method 1:

When AC is running, press “HEALTH” button 8 times, reset successfully after twice “beep” sounds. (see Fig.5)

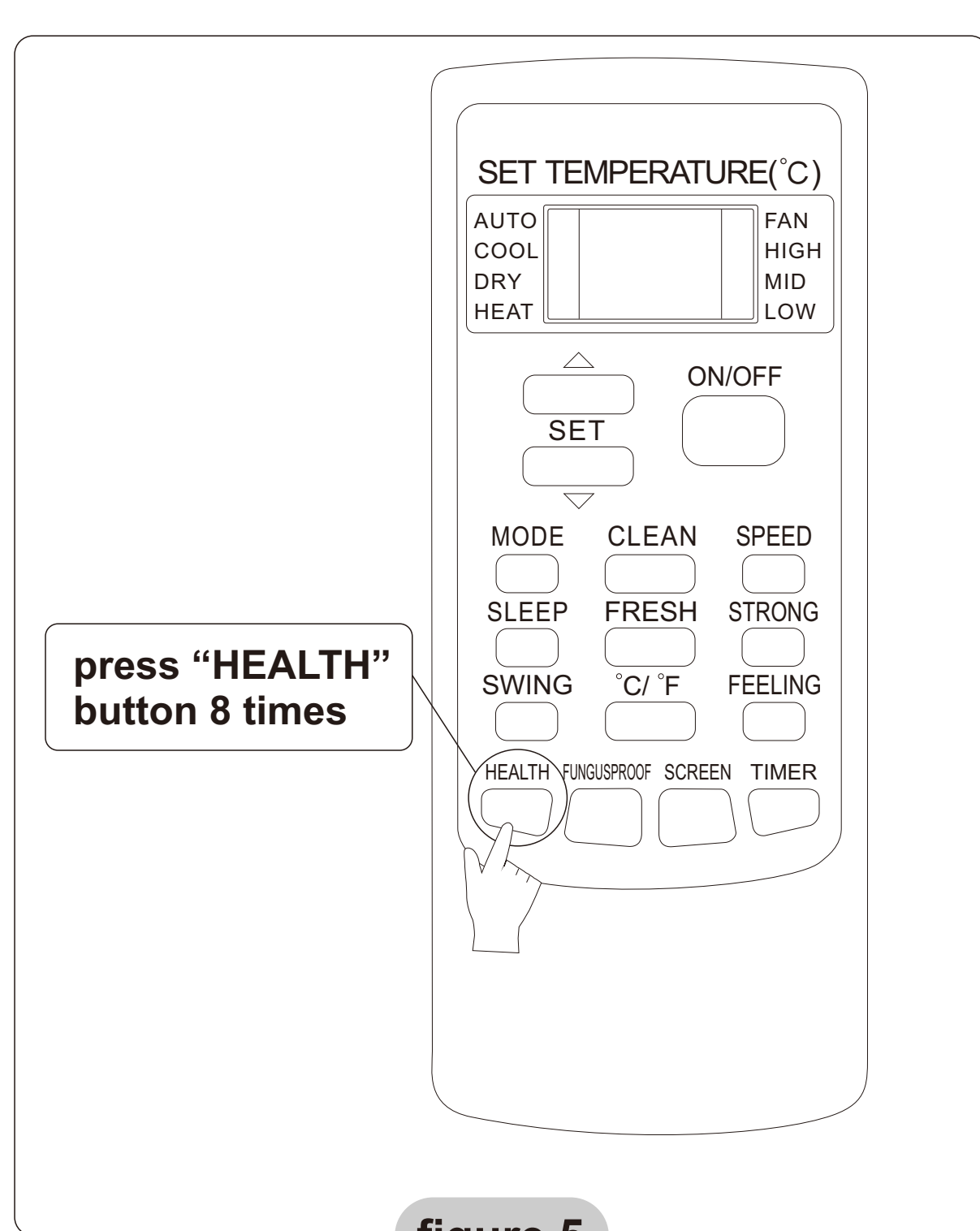


figure 5

Reset AC WI-FI module

Method 2:

When AC is running, press “COOL”(or SOFT) button and “+” button together for 3s, hear “beep” sound for 8 times, then interval 2s and hear twice “beep” sounds, reset successfully. (see Fig.6)

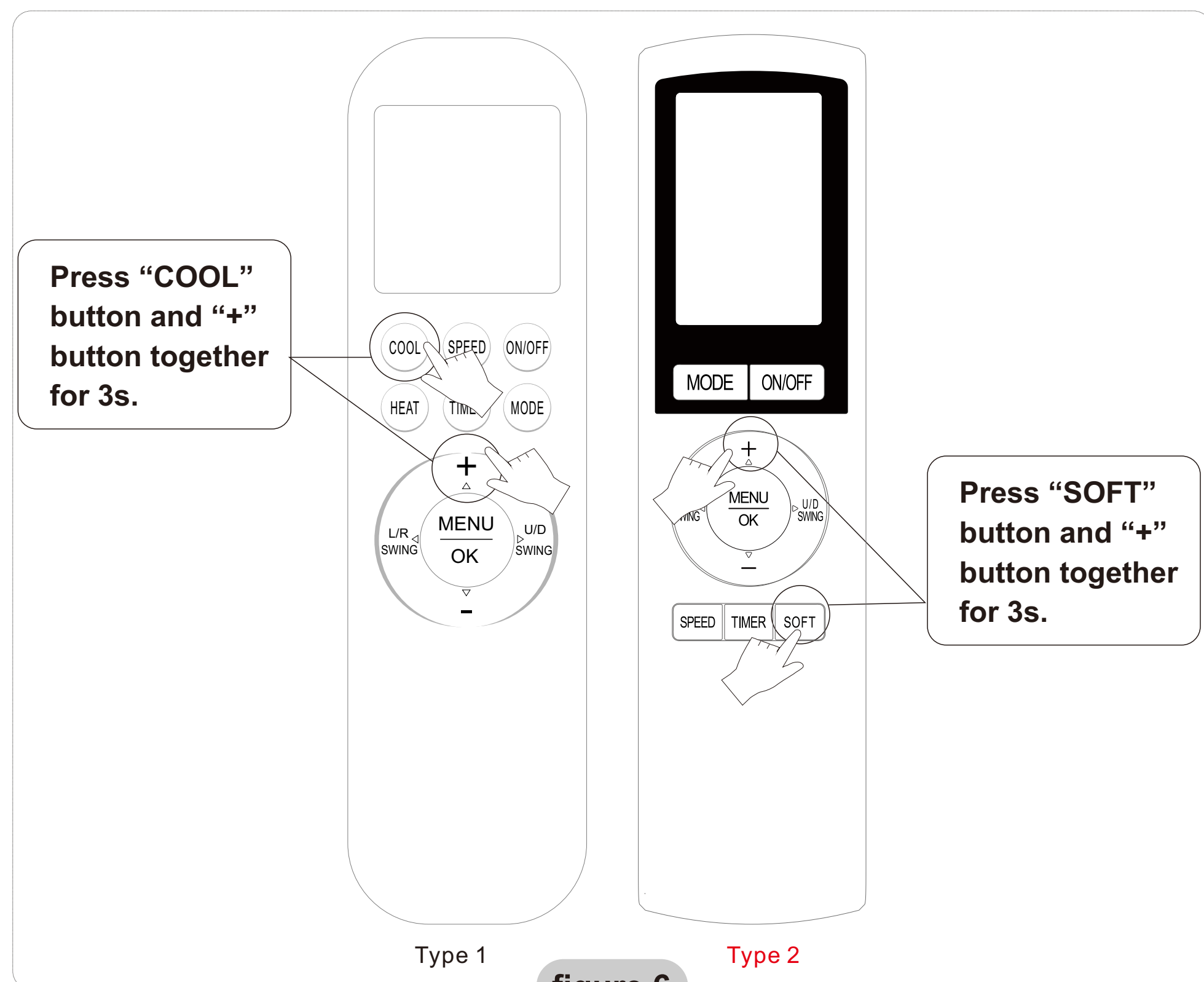


figure 6

Note: If the device is not connected successfully, please reset the air conditioner Wi-Fi in the same way.

Smartphone ,pad or other mobile terminals connect to WI-FI or hotspot

Activate the WI-FI function of the mobile terminal and connect it to a wireless router or an access point.

Note:
A wireless router is required for the WI-FI function to work. Please purchase one if you do not already have one.

Configure the Devices

After the control software is downloaded and installed on the mobile terminal, configure the AC devices according to the following figure.

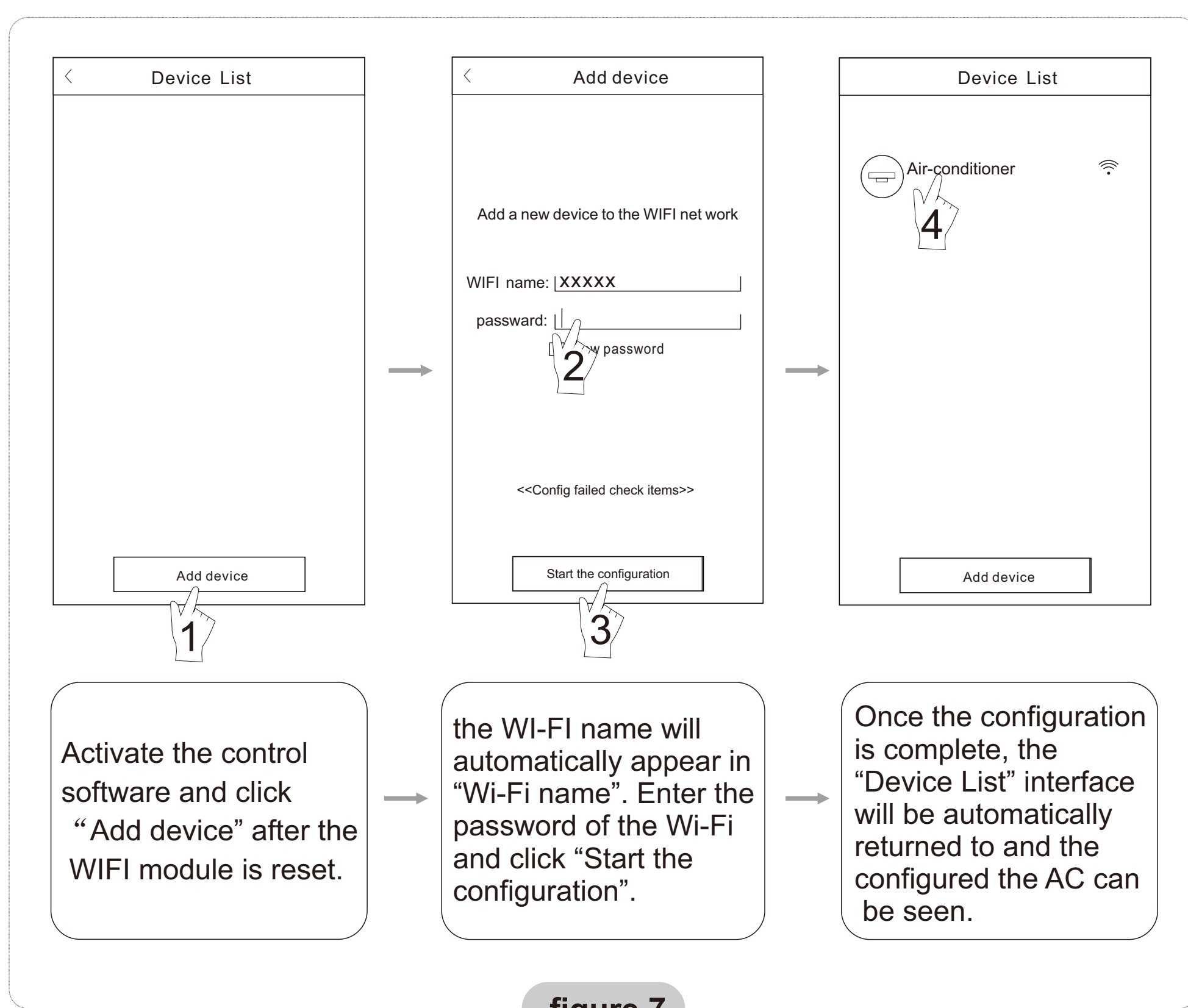


figure 7

Note: 1. In the case of first time configuration or after the connected wireless router or access point is changed, make sure the mobile terminal is already connected to the wireless router or access point to be paired with the WI-FI module.

2. If the configuration is failed, press “Config failed check items” to check the notes about the failure before reconfigure the AC.

After the configuration is successful, click the corresponding AC name to enter the control interface for further operation.

Others

1. The software provides help service through which the users may check the operational instructions of the software and other information.
2. Besides, as the operation interface and the function of the software is under constant improvement, we will keep you informed about the subsequent upgrades for your updating.
3. As the operation interface may change due to the constant version upgrading, the figures in this manual are for reference only, so please rely on the actual operation interface.

Appendix A: <<Config failed check items>>

1. Please check the Wi-Fi icon on the air conditioner panel, if the icon not display, please contact customer service.
2. Please make sure the mobile phone network under the current router WI-FI environment: Close the mobile phone 3G/4G data connection, to be connected to the router WI-FI pairing.
3. Please check whether the module is reset successfully. For details, see “Reset AC WI-FI module”.
4. Please check the Wi-Fi name of the router, recommended not contain spaces and other non-alphanumeric characters.
5. Please check the Wi-Fi password of the router, not allowed more than 32 bits, recommended not contain spaces and special symbols in addition to letters and numbers.
6. Please check whether the Wi-Fi password input is correct when APP configuration : you can check show password to confirm when input the WI-FI password.