

Air conditioners

Q-SMART ECO

AUX



www.auxcool.com

AUX Q-SMART ECO

features and functions



ECO mode

Stand-by mode

Refrigerant R32

ECOLOGY

Self-diagnosis function

24-hour timer

LED screen

Dual condensate drainage

CONVENIENCE

Washable filter

UV sterilization

Sterilization 57°C

Antibacterial filter

Self-cleaning function

High-density filter

Anti-fungus function

HEALTH

Automatic restart

Intelligent defrosting

Hydrophilic aluminium fins

Gold-coated fins outdoor unit

Gold-coated fins indoor unit

Corrosion resistant casing

DC Inverter technology

Pre-Heating function

TECHNOLOGY

Heating at -15°C

Quiet mode

Night mode

4D air circulation

Air vanes vertical movement

Air vanes horizontal movement

TURBO mode

Cooling mode

I-FEEL function

Dry mode

Heating mode

80°C heating mode

Ventilation mode

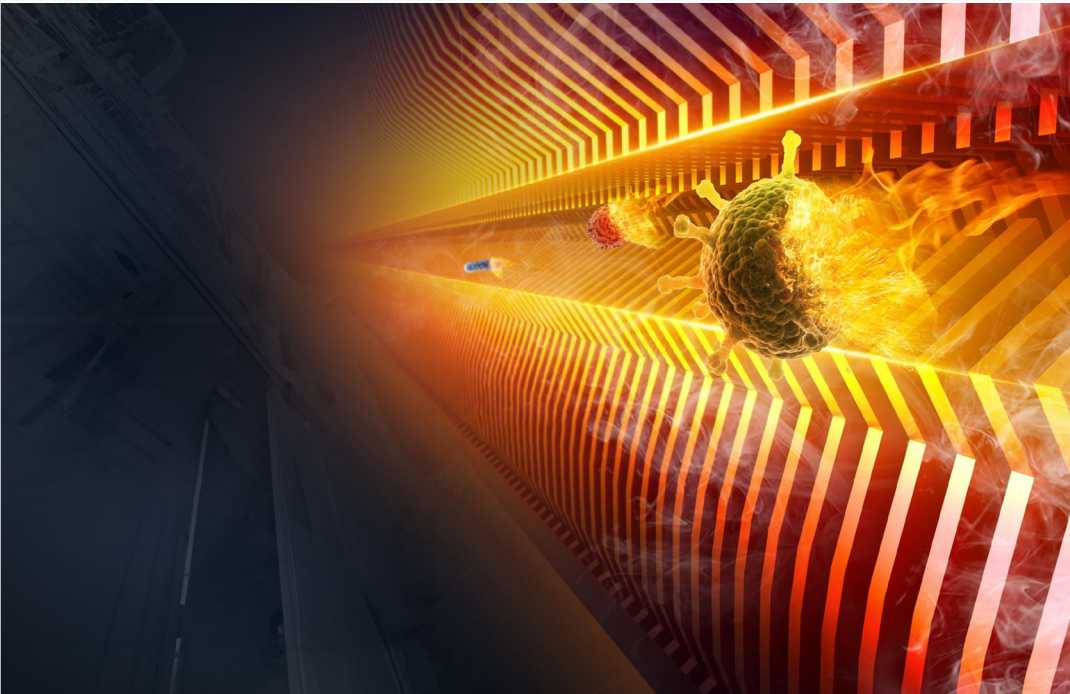
Szybkie chłodzenie / ogrzewanie

AUTO mode

COMFORT

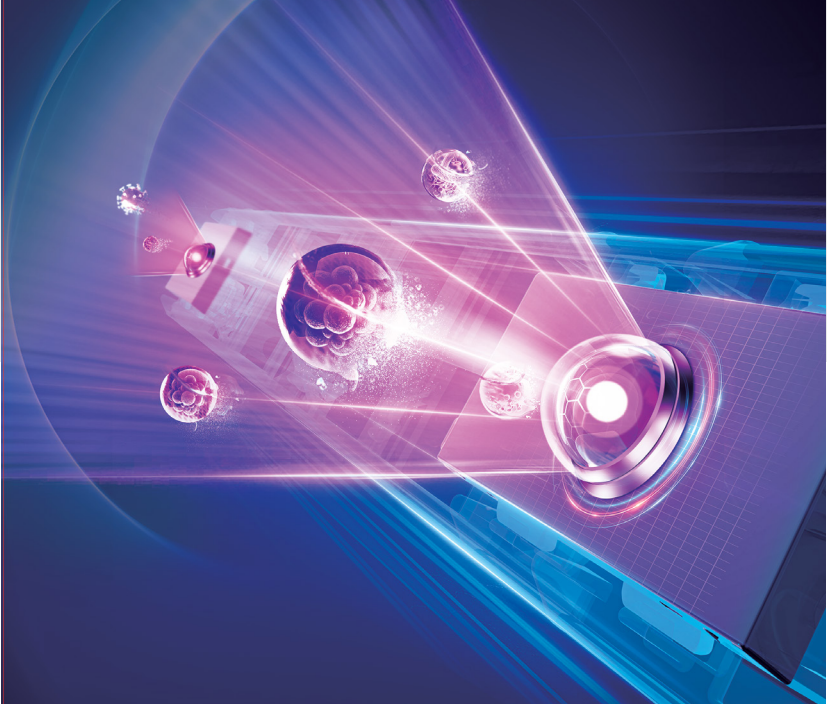
AUX Q-Smart Eco

cares about your health



Sterilization at 57°C

The heat exchanger maintains a high temperature of 57°C for an appropriate duration to ensure optimal sterilization, effectively eliminating microorganisms, bacteria, and viruses.




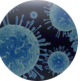
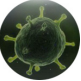
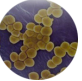
UV lamp sterilization

The Q-Smart Eco model is equipped with a UV lamp that ensures clean and healthy air. UV sterilization effectively purifies the air by eliminating viruses, fungi, and microorganisms. This function is especially recommended for allergy sufferers and individuals prone to infections.



Self-cleaning function

The self-cleaning function effectively eliminates dirt and deposits that accumulate on the evaporator, ensuring its hygienic cleanliness. The process begins with moisture condensation on the evaporator surface, followed by freezing, which effectively eliminates bacteria and microorganisms. The next stage is defrosting, which removes the accumulated contaminants. Finally, the evaporator is rapidly dried and sterilized by heating it to a temperature of 57°C, ensuring maximum hygiene and operational efficiency.

- Elimination of contaminants at a level of 99.9%:
- | | |
|--|--|
|  Influenzavirus |  E. coli bacteria |
|  HFMD virus |  Staphylococcus aureus bacteria |

Inhibits virus development by 99% through effective disinfection

AUX Q-Smart Eco cares about your comfort



Sleep mode

During the active function, **the air conditioner operates according to the set temperature curve**. After activating the function, during the first two hours of cooling mode, **it raises the set temperature by 1°C per hour** (in heating mode, it lowers the temperature at the same rate). For the next 5 hours, it maintains the achieved temperature at a constant level, after which the air conditioner turns off.



Dehumidification mode

In dehumidification mode, **the air conditioner reduces the indoor air humidity to an optimal level** by automatically adjusting the temperature and airflow to achieve the best conditions for drying. **This prevents the development of various contaminants in the air.**



8°C heating mode

Maintaining a constant temperature of +8°C in heating mode, **which prevents the room from cooling down** and provides suitable conditions for pets and plants.



4D airflow

The air louvers of the indoor unit move automatically in both vertical and horizontal planes, **allowing the conditioned air to be blown in all directions (simultaneous vertical and horizontal swing)**.

Maximum comfort



I FEEL function

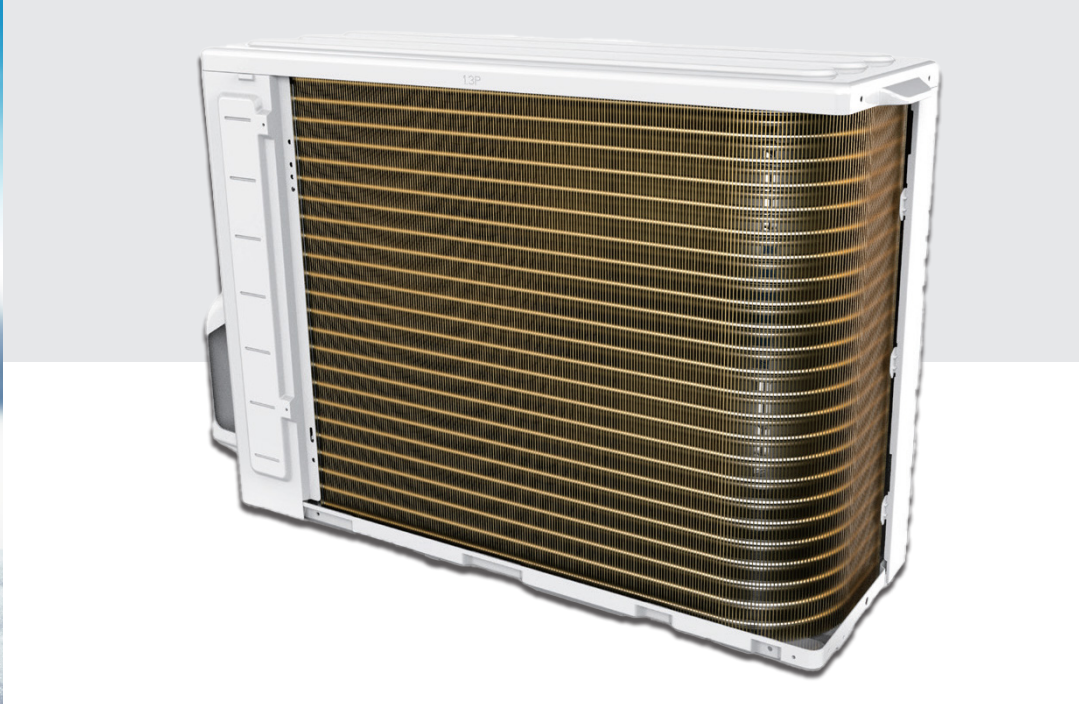
The intelligent temperature reading function "I FEEL" **allows precise adjustment of the airflow temperature to the current conditions in the room**, enabling maximum comfort with low energy consumption.

AUX Q-Smart Eco is modern technology



Intelligent defrosting

The air conditioner activates the defrost mode only when necessary and only for the time needed to defrost the heat exchanger, **allowing nearly uninterrupted operation in heating mode**. The intelligent defrost system improves the energy efficiency of the device by 5% and **increases heating performance by up to 20% in low outdoor temperatures**.



Gold-plated heat exchanger fins

The heat exchanger surfaces in the indoor and outdoor units **are coated with a unique golden layer that effectively prevents bacterial growth and enhances the heating efficiency of the devices**. It is also more resistant to oxidation and corrosion than the standard blue coating, further extending the device's lifespan.

Built-in Wi-Fi module

The Q-Smart Eco model **is equipped with a Wi-Fi 2.0 module that plugs into the air conditioner via a USB connector**. This easy-to-install solution allows you to control the device's operating parameters using mobile devices, even when you are away from home or the office where the air conditioner is installed.

AC-Freedom app

To control the air conditioner via Wi-Fi, it is necessary to install the AC Freedom app on your mobile device. **The app allows you to manage multiple devices and save individual settings for each, such as operating mode, temperature settings, and fan speed level**. The app's user-friendly and simple interface ensures maximum convenience in controlling the device.



Convenient and easy control from anywhere in the world

Q-SMART ECO

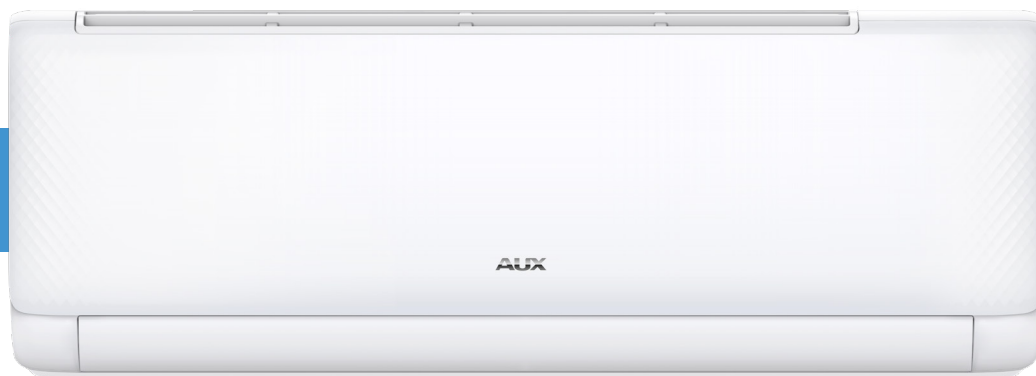


AUX Q-SMART ECO Technical specifications

Series QG
AUX-09/12/18/24QG



Model		AUX-09QG	AUX-12QG	AUX-18QG	AUX-24QG
Cooling capacity	[kW]	2,70 (0,60 - 3,80)	3,50 (0,80 - 4,10)	5,30 (1,30 - 5,70)	7,20 (1,80 - 7,30)
Heating capacity	[kW]	3,00 (0,80 - 4,20)	3,80 (1,00 - 4,20)	5,40 (1,30 - 5,50)	7,20 (1,80 - 7,40)
Power supply	[V~,Hz,Ph]	220-240, 50, 1	220-240, 50, 1	220-240, 50, 1	220-240, 50, 1
Operating current	Cooling	[A]	3,90 (0,70 - 7,80)	5,60 (0,70 - 7,80)	7,80 (2,20 - 9,30)
	Heating	[A]	3,70 (1,50 - 8,00)	4,90 (1,50 - 8,00)	6,50 (2,00 - 8,00)
Power consumption	Cooling	[W]	830 (100 - 1600)	1180 (100 - 1600)	1650 (290 - 2100)
	Heating	[W]	800 (300 - 1600)	1100 (300 - 1600)	1470 (250 - 1800)
Maximum current draw	[A]	9,5	9,5	12,0	16,0
Maximum power consumption	[W]	1800	1900	2500	3400
SEER / SCOP	-	6,20 / 4,00	6,20 / 4,00	6,80 / 4,00	6,10 / 4,00
Energy Efficiency Class	Cooling	-	A++	A++	A++
	Heating	-	A+	A+	A+
Indoor unit		AUX-09QG/I	AUX-12QG/I	AUX-18QG/I	AUX-24QG/I
Airflow rate	[m³/h]	620/580/480/430	600/550/500/400	1230/1080/970/850	1300/1200/1010/870
Noise power level	[dB(A)]	38/31/27/22/19	38/32/29/23/20	41/32/31/26/23	38/36/33/31/23
Noise pressure level (turbo/5step-1step/silence)	[dB(A)]	44/40/39/31/24	44/40/36/32/23	43/40/37/35/30	48/43/40/37/28
Indoor unit dimensions	[mm]	762 x 295 x 200	762 x 295 x 200	960 x 315 x 222	1089 x 328 x 227
Indoor unit weight	[kg]	7,3	8,0	11,5	13,0
Outdoor unit		AUX-09QG/O	AUX-12QG/O	AUX-18QG/I	AUX-24QG/I
Refrigerant	Type	-	R32	R32	R32
	Factory charge (up to 5m)	[g]	550	560	850
	Additional charge	[g/m]	20	20	30
Noise power level	[dB(A)]	61	62	62	63
Noise pressure level	[dB(A)]	51	52	53	58
Outdoor unit dimensions	[mm]	710 x 530 x 280	710 x 530 x 280	785 x 555 x 300	900 x 700 x 350
Outdoor unit weight	[kg]	21,5	21,0	27,0	31,5
Operating temperature range	Cooling	[°C]	-10	-10	-10
	Heating	[°C]	-15	-15	-15
Pipe connections (diameter)	Liquid	[inch]	1/4	1/4	1/4
	Gas	[inch]	3/8	3/8	5/8
Maximum piping length	[m]	20	20	20	25
Maximum height difference	[m]	10	10	10	15



AUX
AIR CONDITIONER

Q-SMART ECO

air conditioners

WIENKRA

Exclusive distributor of the AUX brand in Poland

WIENKRA Sp. z o. o.

Cracow:

📍 ul. Kotlarska 34 A
✉ wienkra@wienkra.pl

Cracow:

📍 ul. Rzemieślnicza 20 G
✉ wienkra@wienkra.pl

Warsaw - Janki:

📍 ul. Sokołowska 15
✉ wienkra-waw@wienkra.pl

Wrocław:

📍 al. Armii Krajowej 61
✉ wienkra-wro@wienkra.pl

www.wienkra.pl
www.auxcool.com